



ADAPTED FURNITURE


for people with loss of autonomy or reduced mobility

The most durable adjustable tables on the market



PRODUCT CATALOGUE **VOL.3**

1 800 655-1646 | MPT-INTI.com



Call us about our
**21-day
Free trial***

The MPT difference

- We created the concept of personalized height adjustment for each person seated at the table.
- We are the market leader with over 30 years of expertise.
- Our unique product shapes are patent-protected.
- The comfort and safety of users and caregivers are our priority.
- Our robust 10-gauge (.100") steel frames are strong, durable, and carefully finished using an electrostatic powder coat paint.
- We offer all possible colours available on the market.
- Our products meet strict standards: Greenguard laminate surface, RoHS-certified paint, antifungal treatment for the edging.
- Our products comply with the health network requirements.

A warranty that is unrivaled in the market

*Try out this product free of charge for 21 days. If you are not completely satisfied, return the product. No freight charges.

Table of Contents

Product Construction	04
Colour Choices	05
Assistance Ergonomic Series	07
TDC*4	06
TDR*2	08
TDT*3PP, TDR*4	09
TERC*4	10
Restricted Space Series	11
EM2622*2SS, EM2622*1SS	11
Conventional Series	12
E2622*2SS, E2622*3OSP, E2622*4OSP	12
E2622*3SS, E2622*5SS, E2622*4SS, E2622*5OSP, E2622*6SS, E2622*6OSP	13
MP3015HB, TFC, TFR, TRA	14
TCA/TCA*2/TCA*4, T1P	15
Activity Series	17
TPR*3636, TPR*3660, TRA2PT	16
Lounge Furniture, Chairs, Gliders and Stools	18
MP7005	18
MPT08, MPJYG, MPTEZ, MPCSA, MPCS	20
MPTAD, MP4226	21
MPT2550-10, MPT2550-10L, MPT2550-12, MPT2550-12L	22
Protection Series	22
Proguard	22
Casegoods Series	23
Residence room furniture	23

Innovating to enhance comfort and safety

Since 1991, MPT-INTL has been innovating to provide healthcare providers with adapted furniture for people with loss of autonomy or reduced mobility.

Our objective is twofold: to provide a better quality of life for users and to provide caregivers solutions to facilitate their work.

Our team innovates, develops and continually improves upon our solutions with the goal of offering products that stand out for their excellent quality. Our tables are proudly manufactured in North America and meet the highest requirements of the health network.



Product Manufacturing

Superior quality design and manufacturing

Our exclusively designed tables are built to stand up to ongoing daily use:

- We use the highest grade laminate rather than melamine on our tabletops, making them more scuff-resistant.
- We offer superior quality tabletops with a thickness of 1 in. (2.54 cm), compared to $\frac{3}{4}$ in. (1.9 cm) used by most manufacturers.
- Our table edges have an impact-resistant finish as well have an anti-microbial treatment, for better hygienic protection.
- The steel frames are electrostatic paint coated. As a result, they are solid, aesthetic and durable.

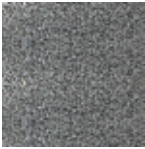
COLOR CHOICES

Quick delivery for standard colours. Our tables are manufactured in three classic colours that blend perfectly with any setting and can be delivered quickly.

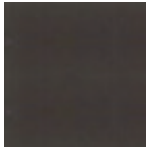
FRAME



Black



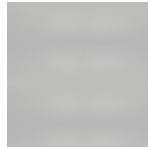
Hammered
Black



Brown



Hammered
Copper



Nickel

EDGING / PVC ROUNDED BULLNOSE ANTIFUNGAL



Black



Brown



Beige

EDGING / FLAT 2MM HOT SEALED



Walnut



Maple



Modern Cherry

HIGHEST QUALITY LAMINATE



Walnut



Maple



Modern Cherry

Colour coordinated with the decor of your spaces.
You can choose from over 300 available colours.
Visit mpt-intl.com.
Custom tables require slightly longer delivery time.



More colours are available at mpt-intl.com. Colours may vary from those shown on-screen.

Call us about our
**21-day
Free trial***



**PATENTED
DESIGN**

07

Assistance Ergonomic Series



TDC*4

Improved comfort and ease of work

The 4 Station table is perfectly suited to large open-space rooms. It is very comfortable for users thanks to the ergonomic design and separate adjustment for each station.

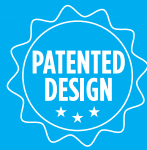
Tabletop dimension: 24.5" x 24.5" (62 cm x 62 cm)

Overall surface dimension: 49" x 49" (124 cm x 124 cm)

Options: 14" (36 cm) round, height-adjustable lazy susan
– Depth adjustable surfaces for improved legroom
– Zero gravity safety struts for enhanced height adjustment and user safety



*Try out this product free of charge for 21 days.
If you are not satisfied with it, you can return it.
No freight charges.



TDR*2

Ideal for long narrow rooms, this 2-station rectangular table makes optimum use of space while remaining ergonomic for both users and caregivers.

Tabletop dimensions:

24" (61 cm) x 26" (66 cm)
or 22" (56 cm) x 26" (66 cm)

Overall surface dimension:

49" (124 cm) x 26" (66 cm)
or 45" (114 cm) x 26" (66 cm)



TDT*3PP

For larger rooms, our 3-station, adjustable ergonomic cloverleaf table offers space and comfort.

Tabletop dimensions:

24" (61 cm) x 24" (61 cm)

Overall surface dimension:

52" (132 cm) x 52" (132 cm)



TDR*4

This 4-station table is designed to be arranged side by side with other similar tables, while remaining ergonomic both for users and caregivers.

Tabletop dimensions:

24" (61 cm) x 26" (66 cm)

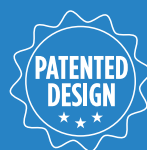
ou 22" (56 cm) x 26" (66 cm)

Overall surface dimension:

49" (124 cm) x 52" (132 cm)

ou 45" (114 cm) x 52" (132 cm)

Assistance and Ergonomic Series



TERC*4

Very comfortable even in confined spaces

Unique on the market, this table provides a comfortable and safe amount of room around chairs, thanks to its patented underframe. The table height can be adjusted quickly and safely with locking handles, maximizing comfort and space for the users.

Tabletop dimensions:

42" = 17" (44 cm) x 23" (58 cm)

44" = 18" (46 cm) x 24" (61 cm)

46" = 19" (49 cm) x 25" (64 cm)

48" = 20" (51 cm) x 26" (66 cm)

Overall surface dimension:

42" (105 cm), 44"(112 cm), 46" (117 cm) or 48" (122 cm)

11

Restricted Space Series



EM2622*2SS/ EM2622*1SS

Adjustable wall-mount table

Height-adjustable wall-mount table accommodates 1 to 2 people and can be folded out of the way when it is not in use to free up space.

Tabletop dimension:
22" (56 cm) x 26" (66 cm)

Options:

- Concave tabletop
- Zero gravity safety struts for enhanced height adjustment and user safety



EM2622*1SS

12

Conventional Series

E2622*2SS
E2622*3SS
E2622*3OSP
E2622*4OSP

Versatile Adjustable Table

This table offers a lot of versatility, through adjusting the height of each seat individually, or adding folding, or fixed surfaces at either end of the table to easily and comfortably accommodate 1 or 2 more people.

Tabletop dimensions:

22" (56 cm) x 26" (66 cm)

Overall surface dimension:

45" x 26" (114 cm x 66 cm)

Options:

12" (31 cm) round, height-adjustable lazy susan

- Depth adjustable surfaces for improved legroom
- Folding surfaces added at either end of the table, measuring 20" (51 cm) x 26" (66 cm) and making it possible to seat 1 or 2 more people
- Zero gravity safety struts for enhanced height adjustment and user safety



E2622*4OSP
Folding Surfaces



E2622*3OSP
Folding Surface

E2622*4SS

The 4-station height-adjustable can accommodate additional guests.

Tabletop dimension:

22" (56 cm) x 26" (66 cm)

Overall surface dimension:

45" (114 cm) ou 52" (132 cm)



E2622*5SS

E2622*5OSP

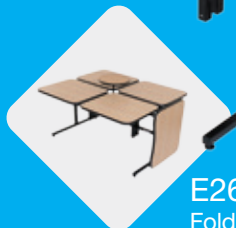
A conventional 4-station table, with options of 1 folding surface, or 1 fixed surface, to add a 5th station.

Tabletop dimensions:

22" (56 cm) x 26" (66 cm)

Overall surface dimension:

45" (114 cm) x 78" (198 cm)



E2622*5SS
Fixed Surface

E2622*5OSP
Folding Surfaces

E2622*6OSP

Folding Surfaces



E2622*6SS

E2622*6OSP

A conventional 4-station table that can be converted with options of 2 additional folding surfaces, or 2 additional fixed surfaces to comfortably seat 6 people, and therefore accommodate a larger group.

Tabletop dimensions:

22" (56 cm) x 26" (66 cm)

Overall surface dimension:

45" (114 cm) x 104" (264 cm)

E2622*6SS
Fixed Surface

MP3015HB

Mobile Adjustable Bedside Table.

Dimensions:

Table Top: 30" (76 cm) x 15" (38 cm),
Height adjustable tabletop from 29" (74 cm) to 44" (112 cm)



TFC

Fixed height square table.

Dimensions:

42" (107 cm), 44" (112 cm),
46" (117 cm) or 48" (122 cm)



TFR

Fixed height round table.

Dimensions:

42" (107 cm), 44" (112 cm),
46" (117 cm) or 48" (122 cm)



TRA

Height-adjustable round table available in 4 sizes to adapt to your space requirements.

Overall surface dimension:

42" (107 cm) or 44" (112 cm) or
46" (117 cm) or 48" (122 cm)

Options:

Zero gravity safety struts for enhanced
height adjustment and user safety.



TCA

Adjustable height square table, available in 4 sizes to adapt to your space requirements.

Overall surface dimension: 42" (107 cm) or 44" (112 cm) or 46" (117 cm) or 48" (122 cm)

Options: Zero gravity safety struts for enhanced height adjustment and user safety.



TCA*2/TCA*4

This height-adjustable ergonomic square table is offered in 3 configurations: a single tabletop, or a tabletop divided into 2 or 4 stations.

Overall surface dimension: 42" (107 cm) or 44" (112 cm) or 46" (117 cm) or 48" (122 cm)

Options: Lazy Susan, Zero gravity safety struts for enhanced height adjustment and user safety.



T1P

Single station, concave tabletop is easily adjustable to provide greater comfort for the user.

Tabletop dimensions:

24" (61 cm) x 26" (66 cm)
or 22" (56 cm) x 24" (61 cm)



**Easy
to store**



TRA2PT 4 place height adjustable table

Dimensions:

Height adjustable tabletop
from 27" (69 cm) to 37" (94 cm)

Two sizes available :

36" (91 cm) x 60" (152 cm)
or 36" (91 cm) x 78" (198 cm)

Weight:

Approximately 150 lbs (68 kg)

Options:

Concave table top front



17

Activity Series



TPR*3636 - TPR*3660

Additional Easy-to-store tables

These height adjustable rectangular or square tables are perfect for organizing activities or events.

The tables have casters and are the table tops easily fold to optimize storage.

Dimensions:

36" (91 cm) x 36" (91 cm) or
36" (91 cm) X 60" (152 cm)

Weight:

60 lbs (22 kg)
75 lbs (34 kg)

Options:

Concave tabletop

18

Lounge Furniture, Chairs, Gliders and Stools



MP7005

Elegant and lightweight make a good combination

Exceptionally comfortable, this dining armchair is made of easy-care material, in addition to its solid, durable and lightweight aluminum frame. The faux wood finish makes a Chic and tasteful statement.

Option:

Available with or without padded armrests.



Aluminium Frame Chairs



Lounge Furniture, Chairs, Gliders and Stools

MPT08

More durable and sturdier than wood, this high-back aluminum chair available in a variety of finishes.



MPJYG

This traditional-style chair is comfortable, with its rounded plastic arms and high-density foam padding on the seat. Its robust frame is both solid and light for greater ease of handling.



MPTEZ

The MPTEZ mobility assistance unit can be retro fit to most chairs. It enables caregivers to effortlessly move a seated person to and from a table. Can move 300 lbs securely without floor damage or risk of injury.

MPCSA

Stackable chair (up to 12) with armrests is particularly solid and light at the same time. A reinforcement bar is located under the seat.

MPCS version without armrests available.



**Solid
Durable
Light**

MPTAD

Height-adjustable ergonomic stool with a swivel-style armrest makes it possible to work in comfort safely. The armrest swivels independently from the seat but only while sitting down. It is equipped with 5 wheels, which provide stability and ease of movement.

Standard Seat height adjustment:
17" (43 cm) to 23" (58.42 cm)

Extra seat height adjustment:
18,5" (46.99 cm) to 28" (71.12 cm)



MP4226

Equipped with an auto-lock mechanism and hand grips to help with sitting down and getting up again easily, this glider is a wise and safe choice for senior residences and long-term care homes. The glider's non-slip legs are height-adjustable. The superior density upholstery makes this chair very comfortable. Vinyl upholstery available in a wide range of colours. The frame of the glider is available in black only. One-year warranty.



MPT2550-10 | MPT2550-10L

MPT-INTL suggests the MPT2550-10, a comfortable Easy-chair, well padded, and properly dimensioned, designed specifically for Senior Living.

Options:

Available in a hide-a- bed version
Locking casters



MPT2550-12 | MPT2550-12L

MPT-INTL suggests the MPT2550-12, a comfortable Love-seat, well padded, and properly dimensioned, designed specifically for Senior Living.

Options:

Available in a hide-a- bed version
Locking casters



Protection Serie

Proguard

Removable protection screen.

Dimensions:

Screen dimension 19" (48 cm) x 23.5" (60 cm) x 1/4" (6 mm)

Options:

Proguard orientation transversal – used to divide square round or rectangular surfaces in half.

19" (48 cm) x 36" (91 cm), 42" (106 cm), 44" (106 cm),
46" (106 cm), 48" (106 cm) x 1/4" (6 mm)



A safe
choice

23

Casegoods Series

Residence room furniture 200 and 200+ Series

from Intellicare Furniture for MPT-INTL

All laminate construction with inset drawer & door faces.
1" Thick panels on top, sides & back, 3/4" thick laminate
drawer & door fronts.

Flush top, available with an overhang top in optional
thermofoil, hd thermofoil or solid surface.

3mm low emission, impact resistant pvc edging.

175 Degree European door hinges.

Full suspension slides with safety stopper
extension & rated for 125 lbs.

5-Piece reinforced drawer construction
with optional solid bottoms.

Available in:

Bedside table

Dresser

Wardrobe

Options:

- Plastic Drawer Liner Inserts
- Wall Anchors
- Locking/Non-Locking Casters
- Vented Back
- Metal Leg styles
- Handle styles
- Lock (Key or Digital)

Other available models





400 Series

500 Series



5220, boulevard Saint-Joseph
Drummondville, Québec, Canada J2A 3V8
Tel: 1 800 655-1646 **Fax:** 819 803-3087
Email: info@mp-intl.com **mp-intl.com**

POSTES	CANADA
CANADA	POST
	
Port payé Courrier personnalisé	Postage paid Personalized Mail
	
2002670	

PORT DE RETOUR GARANTI
RETURN POSTAGE GUARANTEED